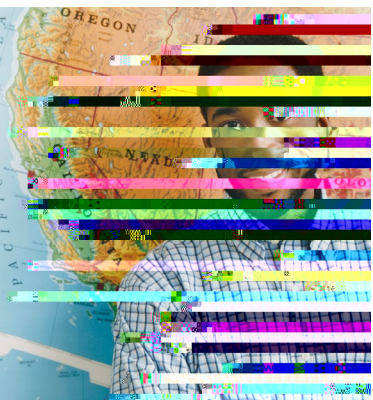
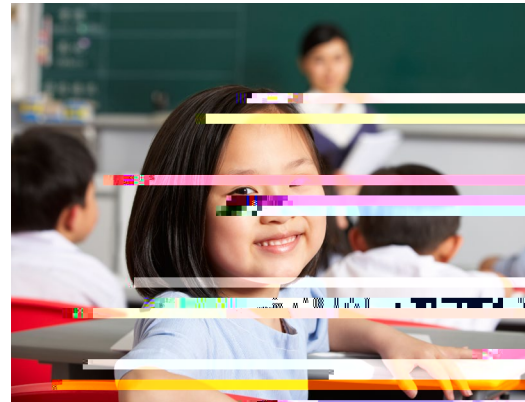
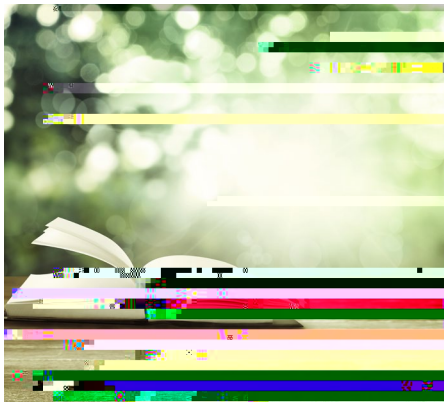




Developed for educators by educators, edTPA® is the first nationally available, performance-based assessment for beginning teachers. This brochure offers information and guidance to P-12 teachers as they partner with preparation programs to support candidates completing edTPA® in their local contexts.



COLLABORATING TO PROMOTE EFFECTIVE INSTRUCTION

1. **Collaborative Planning**

1. **Collaborative Planning**
2. **Collaborative Design**
3. **Collaborative Delivery**
4. **Collaborative Reflection**

1. **Collaborative Planning**
2. **Collaborative Design**
3. **Collaborative Delivery**
4. **Collaborative Reflection**

1. **Collaborative Planning**
2. **Collaborative Design**
3. **Collaborative Delivery**
4. **Collaborative Reflection**

1. **Collaborative Planning**

1. **Collaborative Planning**
2. **Collaborative Design**
3. **Collaborative Delivery**
4. **Collaborative Reflection**

"I love the fact that they video record and analyze what they are doing. The commentaries require them to think about their work. They are forced to teach in every sense of the word."

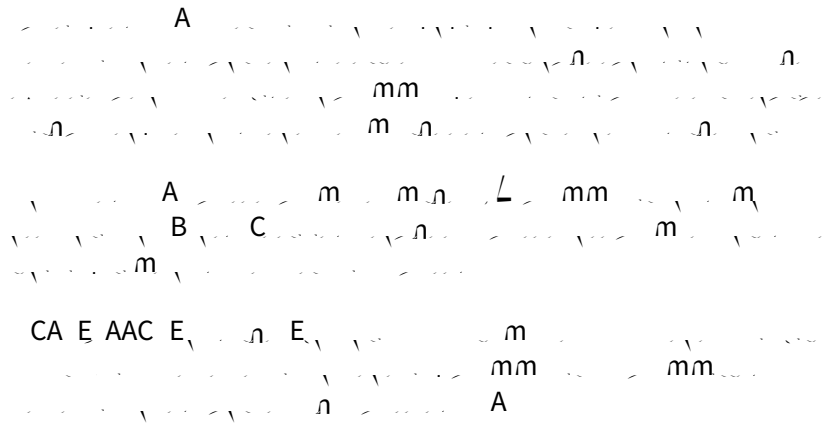
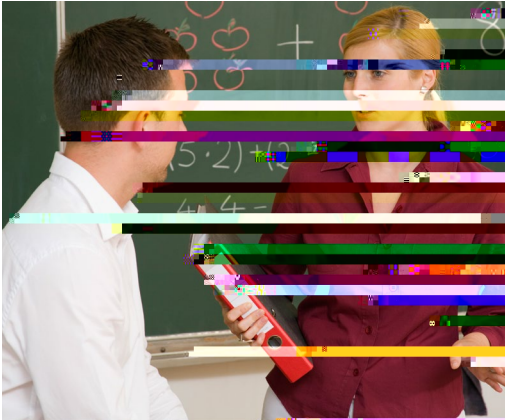
1. **Collaborative Planning**
2. **Collaborative Design**
3. **Collaborative Delivery**
4. **Collaborative Reflection**



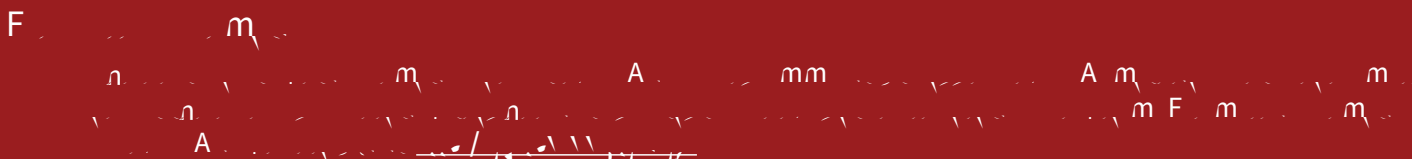
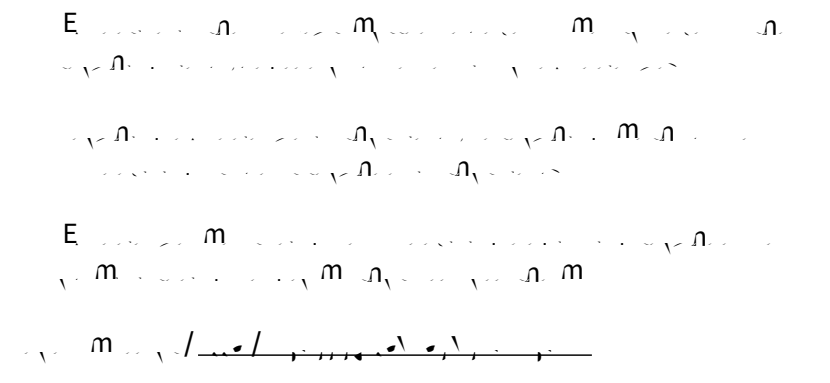
"As an edTPA® scorer, I work to forward the great cause that was the reason I became a teacher—that is, student learning—and I am able to sharpen my professional skills and knowledge in the process."



C B m A



A



A A

edTPA® was developed under the leadership of the Stanford Center for Assessment, Learning and Equity (SCALE) in partnership with the American Association of Colleges for Teacher Education. The edTPA® process draws on experience gained from the 25-year development of performance-based assessments of teaching, including the National Board for Professional Teaching Standards and the Performance Assessment for California Teachers. Thousands of teacher educators and P-12 teachers collaborated to develop edTPA® to meet the need for a nationally available research- and standards-based assessment of candidate performance. Today, 700-plus campuses in some 40 states use edTPA®. The edTPA® trademarks are owned by The Board of Trustees of the Leland Stanford Junior University. Use of the edTPA® trademarks is permitted only pursuant to the terms of a written license agreement.